

VICARAGE NURSERIES, BRETTFORTON

Project details

Vicarage Nurseries is an award-winning family-owned farm set on the edge of Brettforton in the heart of the Vale of Evesham. Established in 1996, the nursery was originally a modest 2.6-acre site, comprising a single one-man operation glass house. Since that time, the business has grown and now extends to over 120 acres that produce 1,500 tonnes of first-class soft fruit.

Works involve, demolition of existing derelict greenhouse commercial site and replace with a new onsite packing house facility. In addition, the incorporation of 7No. 2 bed cottages to accommodate works required to live on site.

Highlights

The main packing facility is designed to incorporate a large Photovoltaic solar array that would match the day-time energy load.

All properties are designed to exceed local planning requirements and reach Code for Sustainable Homes Code Level 5 aspiration.



 Client : Vicarage Nurseries

£2M

50 weeks

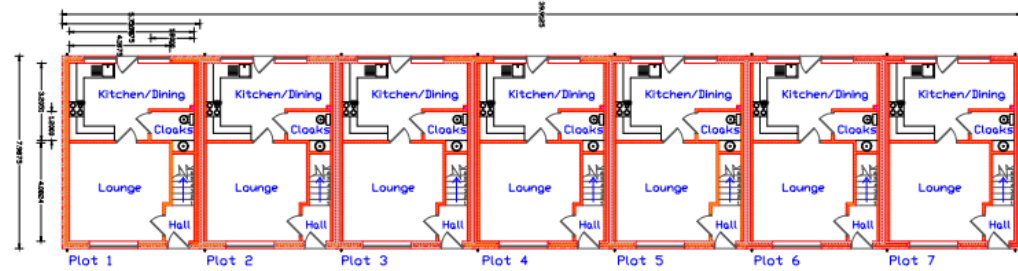
 Reduction
19
TCO2e/yr

Features:



- Low Energy Lighting
- All electric scheme
- Highly efficient fabric
- PV arrays
- EV charging

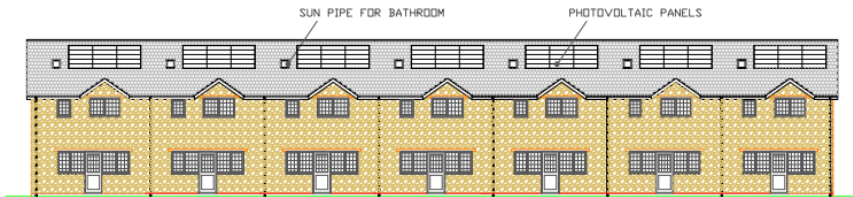
VICARAGE NURSERIES, BRETTFORTON



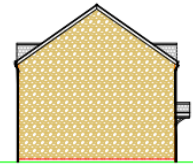
GROUND FLOOR PLAN



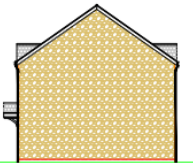
FRONT (NORTH-EAST) ELEVATION



REAR (SOUTH-WEST) ELEVATION



SIDE (SOUTH-WEST) ELEVATION



SIDE (NORTH-WEST) ELEVATION

Sustainability performance

Despite the demise of Code for Sustainable Homes, this scheme still wanted to aspire to the level of Code 5. This incorporated highly efficient Mechanical and Electrical services specification as well as low water consumptions, good material selection; complimented with biodiversity systems, good sustainable travel provisions and low emission rates.

Our Credentials



Low Carbon Consultant



Harniss team

Adam Alexander – Sustainability Lead
Matt Elderton – Energy Assessor